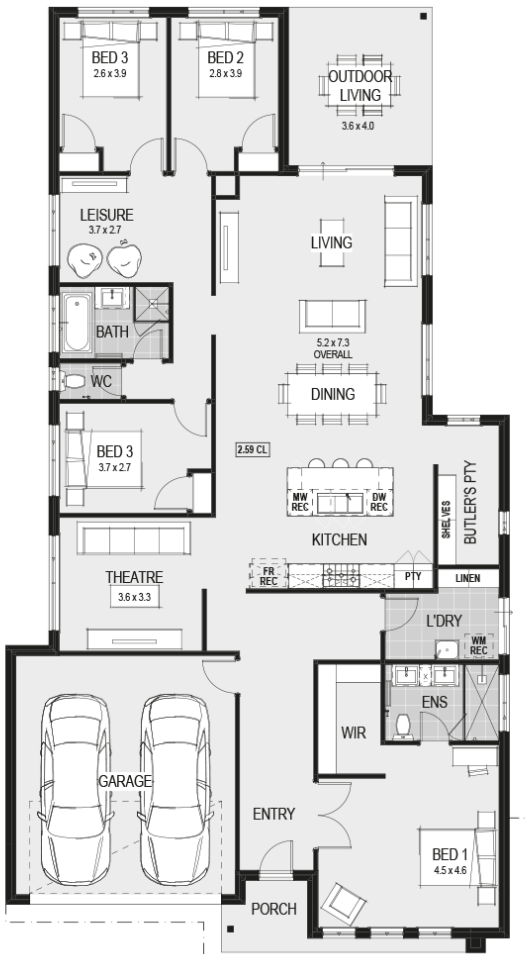




### House Plan:



**LOT #5322**

**Armstrong**

Address: Electric Crescent, Mount Duneed, 3217



**448 m<sup>2</sup>**

## New York 27 - Melbourne - Classic Special

Package Price From

4 2 2 27 sq

**\$789,590\***

### About package:

\*\*All our house designs are fully customisable\*\*

This packages includes our \$38,000 CONTEMPORARY KITCHEN!

- Huge 1200mm Wide Island Bench with breakfast bar
- Stone Benchtops
- Highest Quality European High Gloss Cabinetry
- Lift up and push touch overhead Cupboards
- Extensive Pot Drawers
- Westinghouse 900mm Freestanding Stove
- Electrolux Integrated Rangehood

Plus these Promotions Inclusions for FREE:

- Timber Laminate Flooring & Loop Pile Carpet
- 2590mm high ceilings
- Upgraded Façade\*
- Double Vanity with stone top benches to ensuite\*
- Double titled Shower to ensuite\*
- Luxe Rainhead Dual Combo showerhead to Ensuite
- Double Door Entry to master bedroom\*
- Site Costs

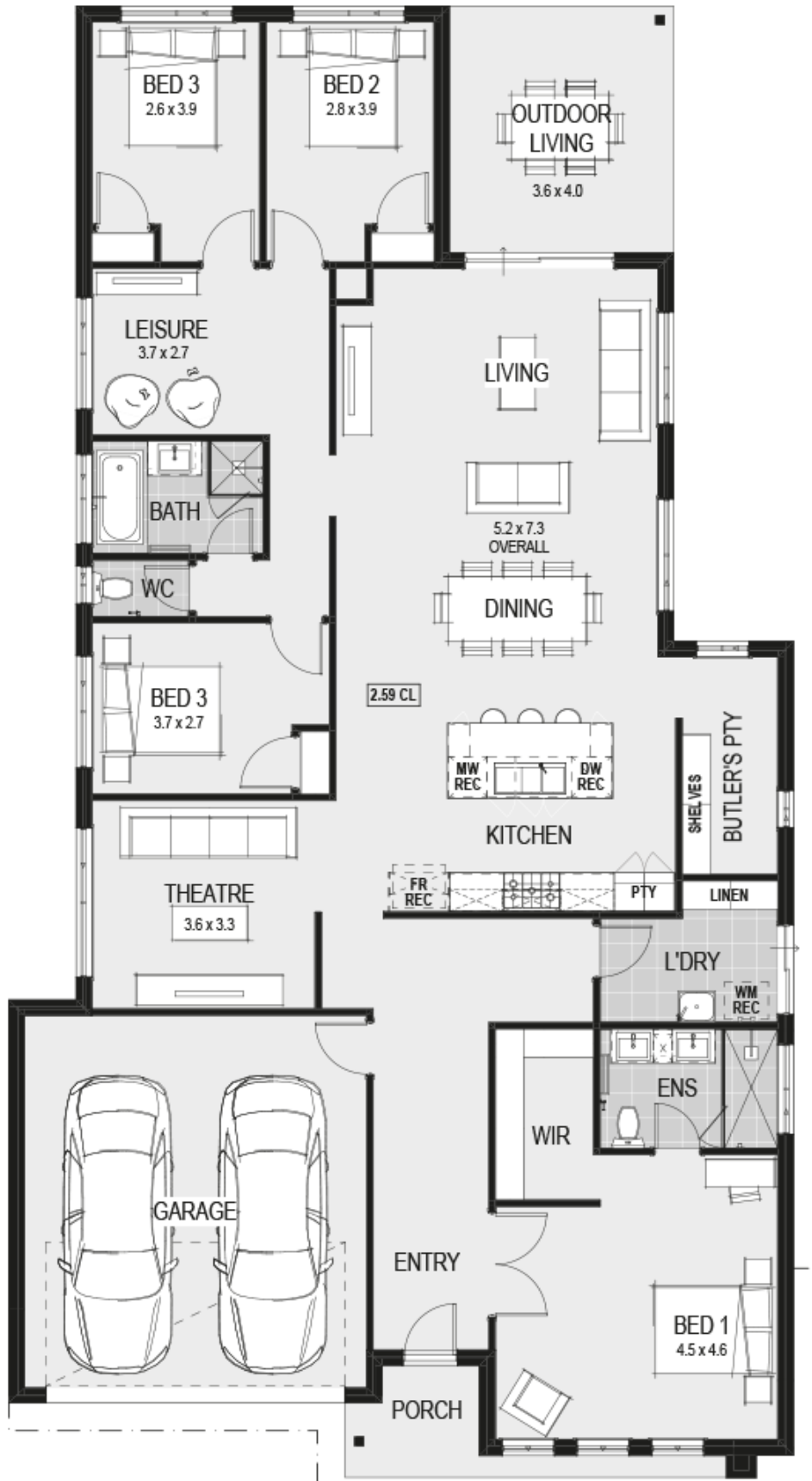
- 12-18 months price hold
- Developer and Council Requirements
- and so much more!!

Who is Home Group?

- Home Group is a family-owned business that is proudly Australian,

### ENQUIRE NOW:

Alysia Hodge • P: 0402 889 805 • E: [alysia.hodge@homegroup.com.au](mailto:alysia.hodge@homegroup.com.au)



**ENQUIRE NOW:**

Alysia Hodge • P: 0402 889 805 • E: [alysia.hodge@homegroup.com.au](mailto:alysia.hodge@homegroup.com.au)