

HIGH GROVE

AT BOX HILL



**TURN
KEY
PACKAGE**

*T&Cs apply

MONTEREY 27 | AUSTIN FACADE

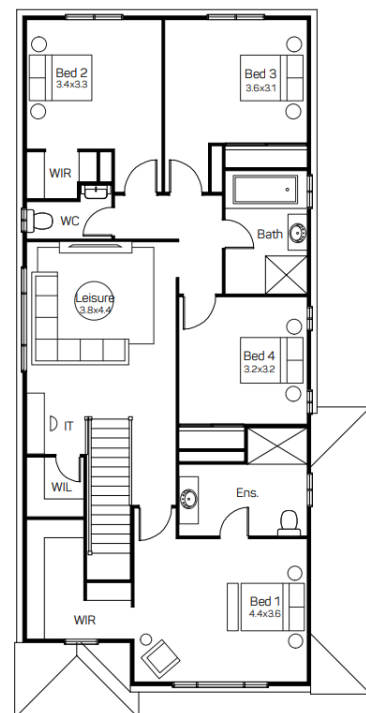
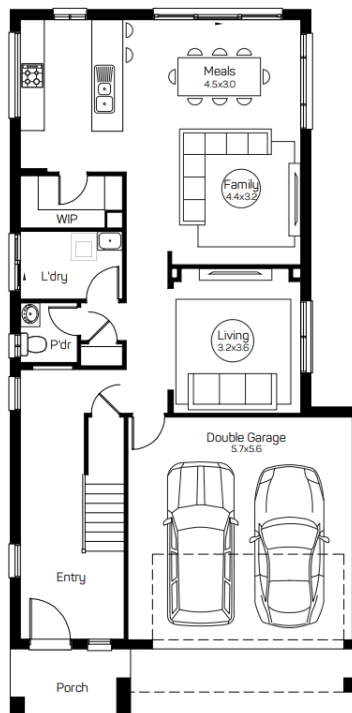
Lot 10 \$1,334,000

4 2.5 2 332m²

LAND REGISTRATION - LATE 2024

Package includes:

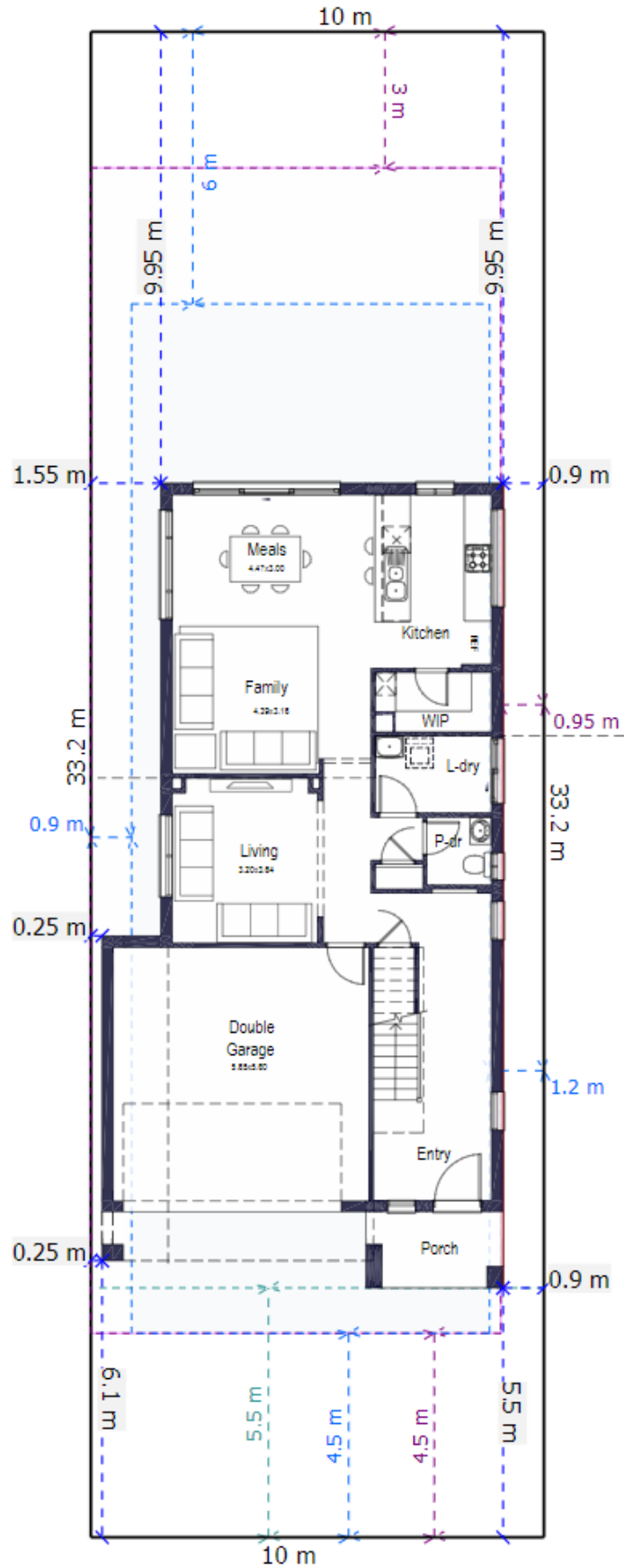
- Quality Tiles and Carpet
- Blinds and Flyscreens to windows
- Insulation to walls and ceiling (excluding garage)
- 900mm Stainless Steel Oven, Cook top and Range hood. Stainless Steel Dishwasher
- 20mm stone bench top to kitchen with Soft close drawers and doors.
- Automatic Garage Doors
- Ducted Air Included
- Solar Bonus
- Driveway, Turf, Letterbox , Site Costs Fencing
- *Current promotional discount already applied



CPG ESTATES

Domaine homes

Terms and conditions apply contact us for more information. Images for illustrative purposes only. Land value included in the package. E&OE. Domaine Homes reserves the right to change the price without notice. Domaine Homes (NSW) Pty Ltd. ABN 19 080 788 969 BL No. 91387C. Prices based on September 2024 Price List.



Monterey 27 332m² Lot

House Length	17.74m	Total Area m ²	251
House Width	8.85m	Total Area Squares	27