

## JADE

4  3  2  350m<sup>2</sup> 

### Lot 518 Specifications

- Lot Width: 12.5m
- Lot Length: 28m
- Lot Size: 350m<sup>2</sup>

### Home Inclusions (cbc)

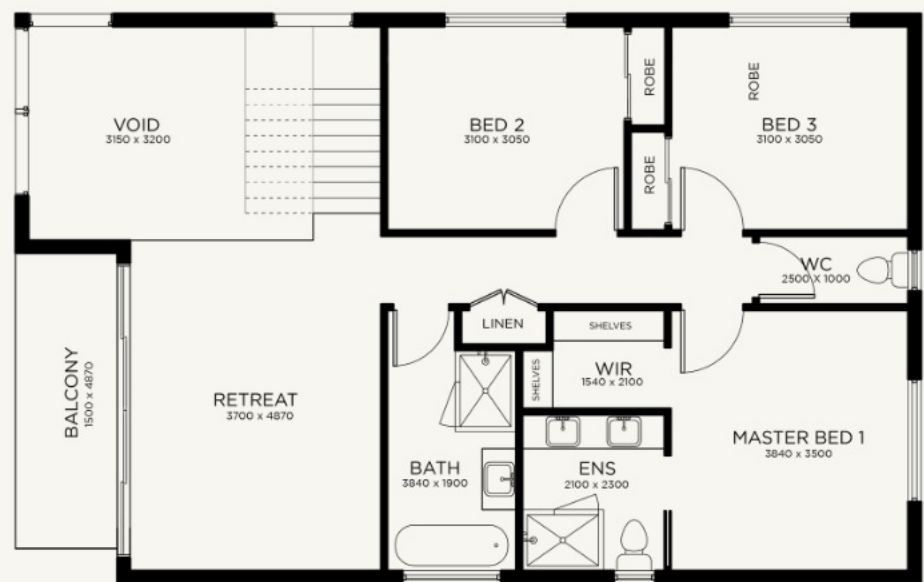
- H Class Slab
- Panel Door & Remote Garage
- Stone Bench Tops in Kitchen
- Stone Bench Tops in Ensuite & Bathroom
- Tiled Shower Bases
- Mirrored Robes
- Carpets & Tiles Floor Covering
- Developer Design Guidelines\*



Ground Floor



1st Floor



**CONTACT OUR TEAM**

John Perrone  
0476 981 713  
1300 013 013  
john@harwoodgroup.au

Suite 53/ Level 4, 80 Market Street  
South Melbourne, Victoria, 3205

[www.harwoodgroup.au](http://www.harwoodgroup.au)

  @harwoodgroup