

House & Land Package

ASPIRE
by ARDEN

ARDEN
HOMES



BANYAN 31

WINDSPRAY FAÇADE

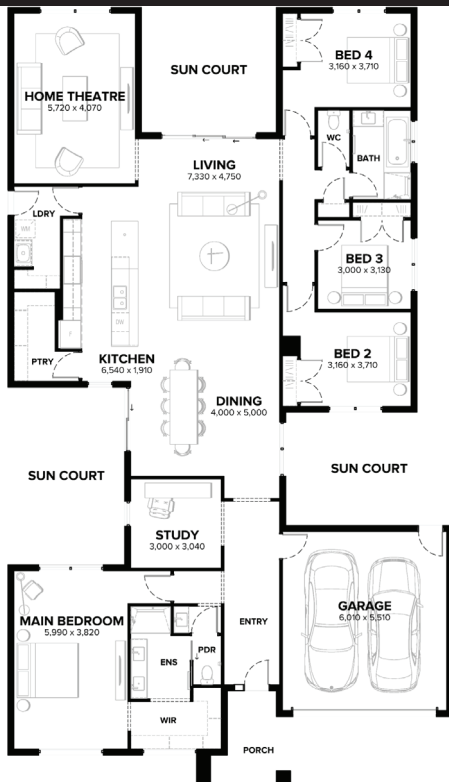
LOT 1026 (576 m²)

RINDLE STREET, CORIDALE, LARA



HOUSE & LAND PACKAGE

\$971,241*



- 7 star energy rating
- All-electric home
- COLORBOND® steel roof and panel lift garage door with remote
- 6.6KW Solar PV system
- 40mm Caesarstone Mineral edge to island benchtop with waterfall end panels
- 20mm Caesarstone Mineral benchtops to kitchen, ensuite(s), bathroom(s) and powder room(s)
- Selection of Fisher & Paykel appliances
- Ducted reverse-cycle heating/cooling with zoning
- Solid timber hardwood staircase
- Premium flooring throughout
- Double glazing to windows

CONTACT Peter Brooks 0428 089 125

ardenhomes.com.au

Coridale
CLUB & COUNTRY

The advertised package price shown includes the \$20k discount from Arden Homes. This lot is eligible for the "Villawood Pays Your Builder Deposit up to \$25,000" promotion. Arden Homes will provide a construction contract for the house and separately the owners will enter into a contract to purchase land directly from the landowner. This advertised offer is subject to availability, statutory approval and a successful settled land contract. Arden Homes reserves the right to change prices or inclusions advertised without notice. For more detailed home pricing, including details about the standard inclusions for the house and optional upgrades and variations, please talk to one of our consultants. Images shown in this brochure may depict upgraded fixtures, finishes and features including items not supplied by Arden Homes such as alfresco decking, internal and external fireplaces, window and house furnishings and landscaping. *For details on the "Live Smarter & Save" and "Villawood Pays Your Builder Deposit up to \$25,000" promotions, visit <https://ardenhomes.com.au/terms-and-conditions/>. CDB-U 48276 and no part may be reproduced or copied without written consent. 21/6/2024