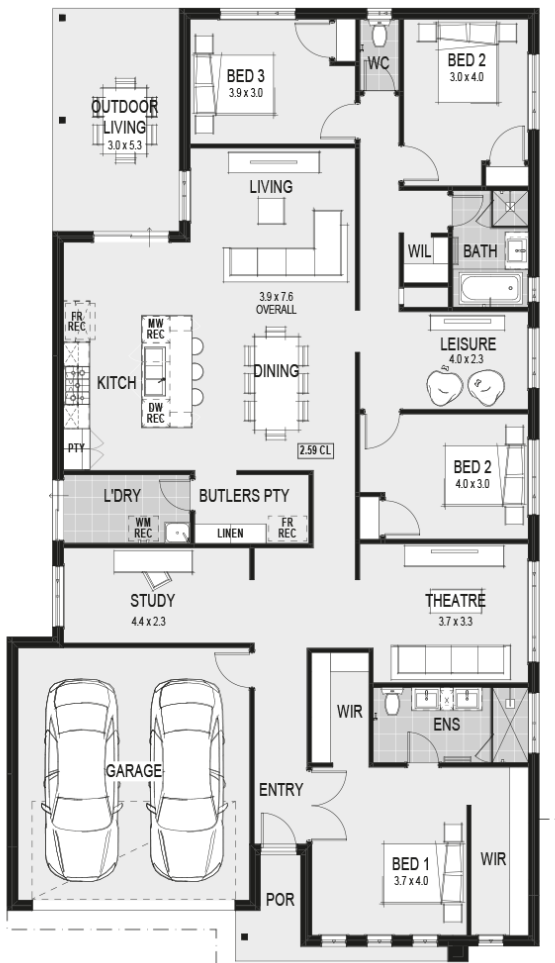




House Plan:



LOT #1042

Coridale

Address: Watercourse Avenue, Lara, 3212



576 m²

Paris 28 - Melbourne - Classic Special

Package Price From

4 2 2 28 sq

\$814,000*

About package:

• All our house designs are fully customisable or bring your own design - Home Group will build it!

Up to \$30K rebate available for a limited time*

This packages includes our \$50,000 LUXURY KITCHEN:

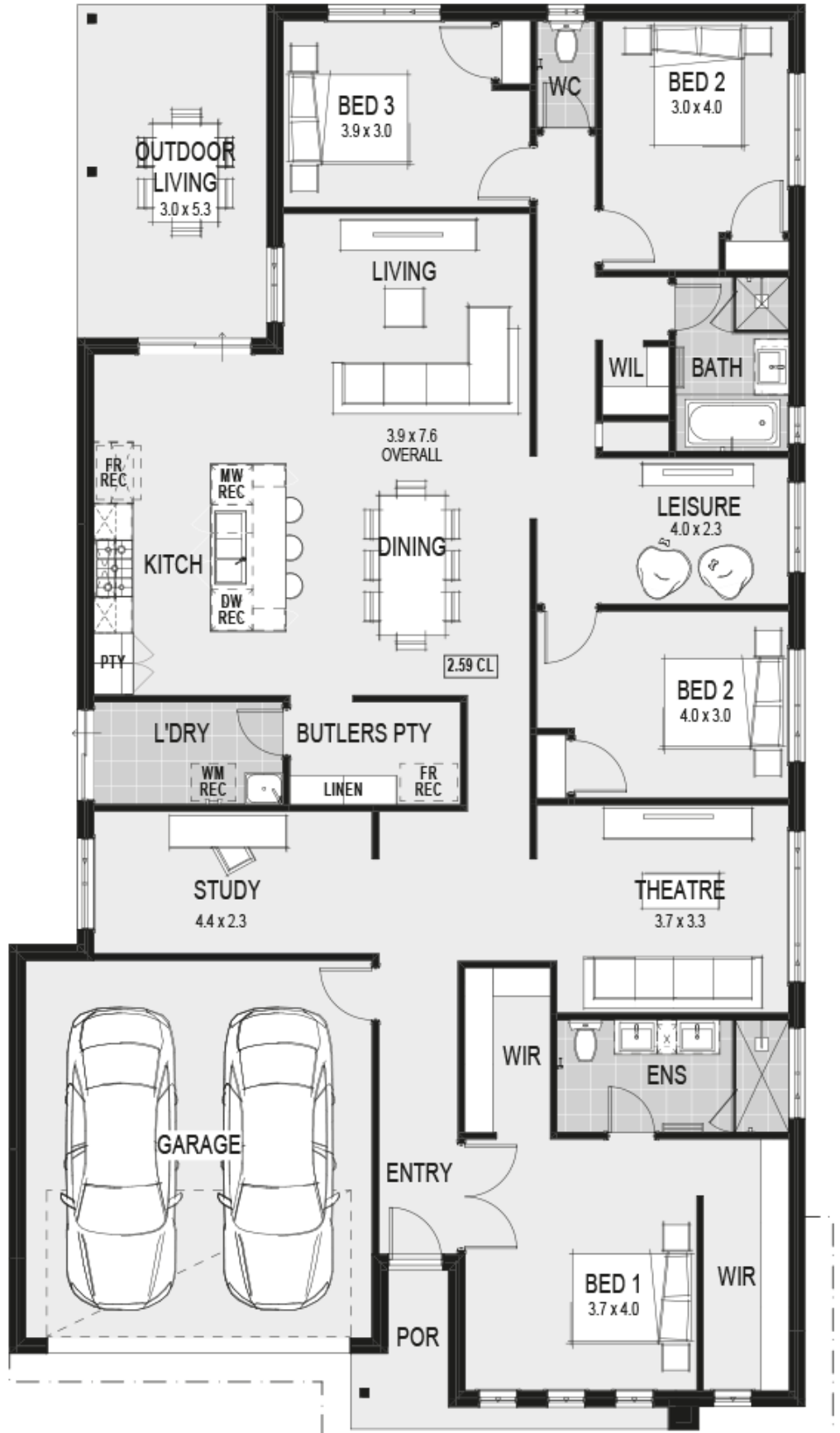
- Electrolux Double Wall Ovens
 - Electrolux 900mm 5 Burner Glass Gas Cooktop
 - Electrolux Integrated Rangehood
 - 1200mm Deep Island Bench with Waterfall Ends
 - Multiple Stone Benchtops & European High Gloss Cabinetry
 - Double Laminate Pantry & Lift Up Overhead Cupboards
 - Combination of Cutlery, Plate and Pot Drawers & Microwave Recess with Pot Drawer Below
 - Undermount Sink & Aluminium Integrated Finger Grip
- Plus these Promotions Inclusions:
- Electronic smart lock upgrade
 - 7 Star Energy Rating
 - Solar System
 - Double Glazing
 - Timber Laminate Flooring & Loop Pile Carpet
 - 2590mm high ceilings
 - Upgraded Façade*
 - Double Vanity with stone top benches to ensuite*
 - Double titled Shower to ensuite*
 - Luxe Rainhead Dual Combo showerhead to Ensuite

ENQUIRE NOW:

Jarrad Hodge • P: 0418 394 708 • E: jarrad.hodge@homegroup.com.au

House Features:

- ✓ NBN connection, Council Charges
- ✓ Site Costs
- ✓ Driveway
- ✓ Luxury Kitchen Upgrade
- ✓ 7-Star Energy Efficiency and NCC Requirements Included



ENQUIRE NOW:

Jarrad Hodge • P: 0418 394 708 • E: jarrad.hodge@homegroup.com.au