



Kingston 27

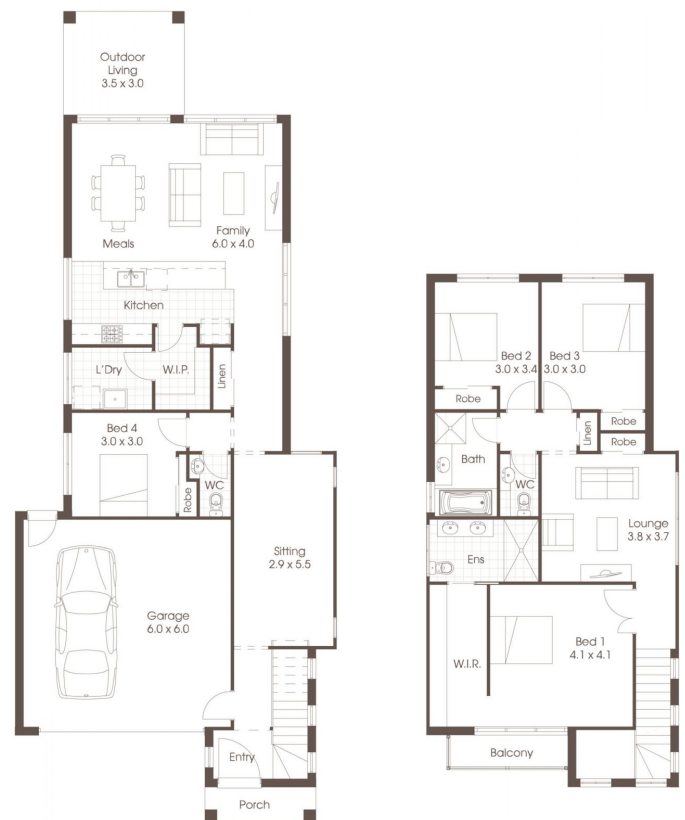
HOUSE & LAND PACKAGE

🏠 | 4 🚿 | 2 🚗 | 2

Address **Lot No: 2005**
Address: Delmare Drive, Estuary Estate,
Leopold
Lot Size: 402^{m2}

Price **\$779,972**

- Carpet to Bedrooms, Hard Floors to Living Areas
- Colorbond roofing with sarking
- Termite treated timber
- Ceiling fixed with a metal batten system
- Bricks over all windows, sliding doors and garages
- Flyscreens to windows and sliding doors
- Westinghouse Appliances including dishwasher
- 20mm Stone Benchtop to Kitchen
- Driveway Included
- Evaporative Cooling and Gas Heating included
- Toilet Roll and Towel Holders included
- Tiled Shower Bases
- Quality Fixtures and Fittings
- YES WE DO FINANCE
- *** Site Costs not included***



For further information contact Cavalier Homes

Jason Cummings
0438 557 338

Cavalier Homes Registered Builders in Geelong CDB-U 63574 (VIC)

Each office is independently owned and operated. Room sizes shown are approximate only, please refer to final working drawings for actual sizes. Plans are protected by copyright. Prices, inclusions and plans are subject to variation without notice. Display/show home designs and inclusions vary throughout Australia and New Zealand and are provided as a guide only. Please refer to your building contract for the specific design and inclusion details of your new home.

*Conditions Apply. Contact us for all information regarding the inclusions. Site allowances subject to soil reports & Engineering report. This information sheet is a guide only.